



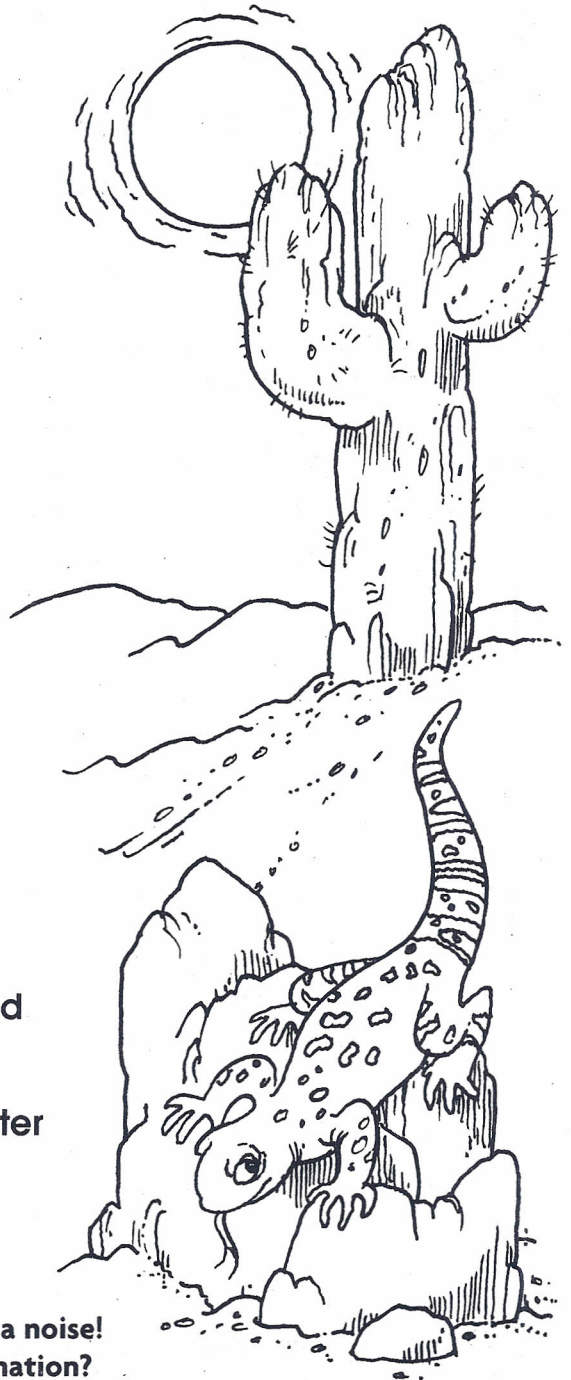
The Dry Desert



A sentence that shows strong feeling or excitement is called an **exclamation**.
It ends with an exclamation point (!).

Finish each sentence with a period, a question mark, or an exclamation point.

1. It is hard for plants and animals to get water in the desert
2. Can a cactus live without enough water
3. Some deserts are hot, and others are cool
4. A lizard is running toward us
5. Does a camel really store water in its hump
6. Some deserts are cold and covered with ice
7. How often does it rain in the desert
8. The largest desert is the Sahara
9. Are there any deserts in the United States
10. There is a long snake slithering across the sand
11. People who live in the desert travel to find water
12. I see water up ahead



Read these two sentences aloud: I hear a noise. I hear a noise!
How does your voice change when you read an exclamation?

Name _____



The Sunny Sahara

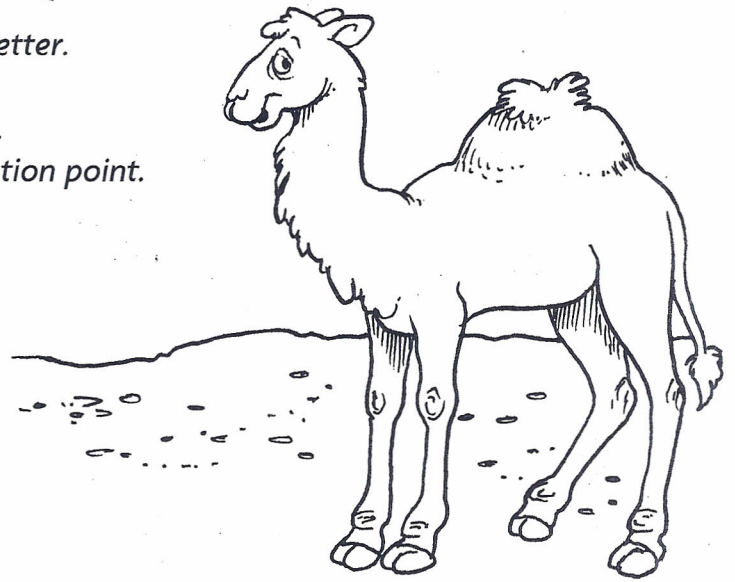


Every sentence begins with a capital letter.

A statement ends with a period.

A question ends with a question mark.

An exclamation ends with an exclamation point.



Write each sentence correctly.

1. the Sahara Desert is in Africa

2. do people live in the Sahara Desert

3. the Sahara Desert is about the same size as the United States

4. how high is the temperature in the Sahara Desert

5. once the temperature reached 138°F



On another piece of paper, write a sentence with two mistakes. Ask a friend to circle the mistakes.



A Snowy Scene



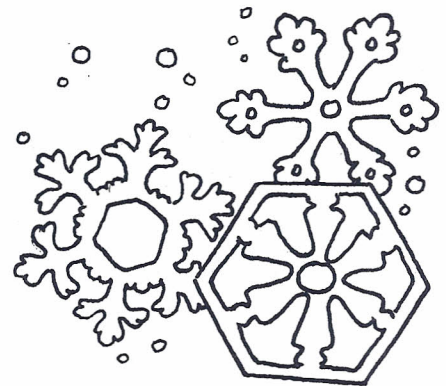
Complete:

Every sentence begins with a _____.

A statement ends with a _____.

A question ends with a _____.

An exclamation ends with an _____.



Write two statements, questions, and exclamations about the picture.



Statements:

1. _____

2. _____

Questions:

1. _____

2. _____

Exclamations:

1. _____

2. _____



On another piece of paper, turn this statement into a question and an exclamation:
It snowed ten inches last night.



A Snowy Story



After you write a sentence, go back and look for mistakes. This is called **proofreading** your work.

Use these proofreading marks to correct 11 mistakes in the story.

 = Make a capital letter.

⊙ = Add a question mark.

○ = Add a period.

⊙ = Add an exclamation point.



Snow Day

the kids at Elm School had been waiting for a snowstorm? they knew school would be canceled if the storm brought a lot of snow last week their wish came true it snowed 12 inches school was canceled, and the kids spent the day sledding, building snowmen, and drinking hot chocolate. it was a great snow day



Find two sentences that had two mistakes and write them correctly.

1. _____

2. _____



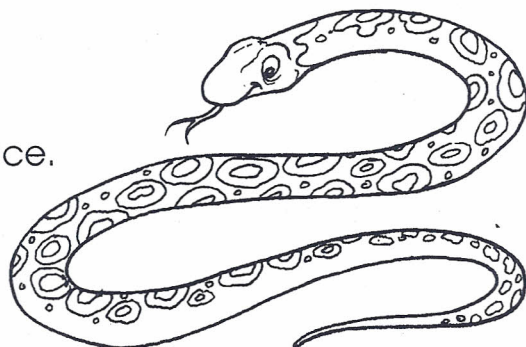
On another piece of paper, write a sentence with two mistakes. Ask a friend to find the mistakes.



Sentences That Slither

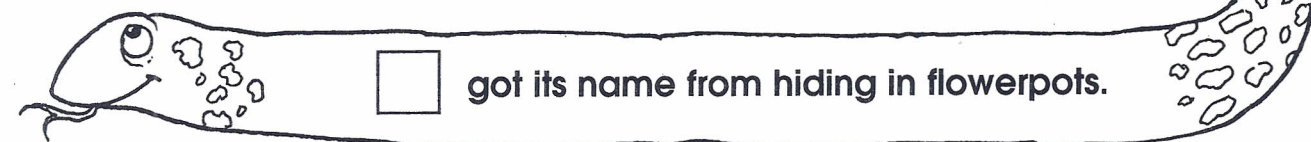
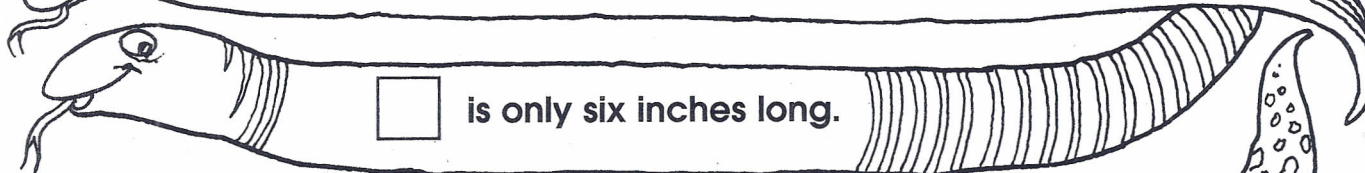
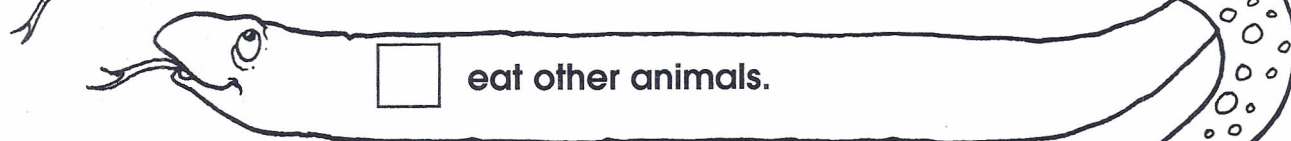
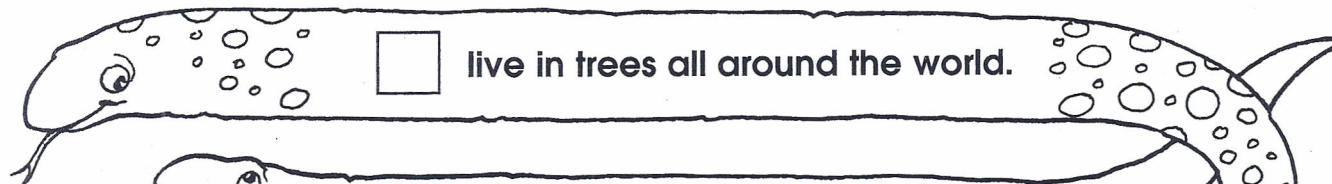


A sentence tells about someone or something.
This is called the **subject**.



Write the letter to show the subject of each sentence.

- A. The short blind snake
- B. Tree snakes
- C. The flowerpot snake
- D. Bird snakes
- E. A pit viper snake
- F. All snakes



Confuse someone at home! Leave out the subject part of two sentences at dinner.
Can they understand?